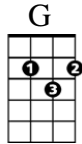
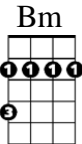
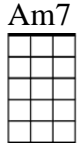


Daydream Believer



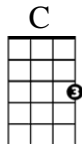
Verse 1:

Oh, I could [G]hide 'neath the [Am7]wings
 Of the [Bm]bluebird as she [C]sings
 The [G]six o'clock a[Em7]larm would never [A]ring [D]
 But it [G]rings and I [Am7]rise
 Wipe the [Bm]sleep out of my [C]eyes
 My [G]shaving [Em7]razor's [Am]cold [D7]and it
 [G]stings



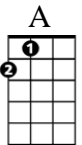
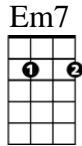
Chorus:

[C]Cheer up [D]sleepy [Bm]Jean
 [C]Oh what [D]can it [Em]mean [C]to a
 [G]Daydream be[C]liever and a
 [G]Home[Em]coming [A7]queen [D7]



Verse 2:

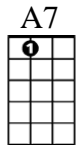
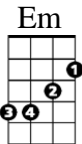
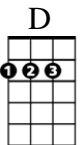
You [G]once thought of [Am7]me
 As a [Bm]white knight on his [C]steed
 [G]Now you know how [Em7]happy I can [A]be [D]
 Oh, and our [G]good times start and [Am7]end
 Without [Bm]dollar one to [C]spend
 But [G]how much, [Em7]baby, [Am]do we [D7]really
 [G]need

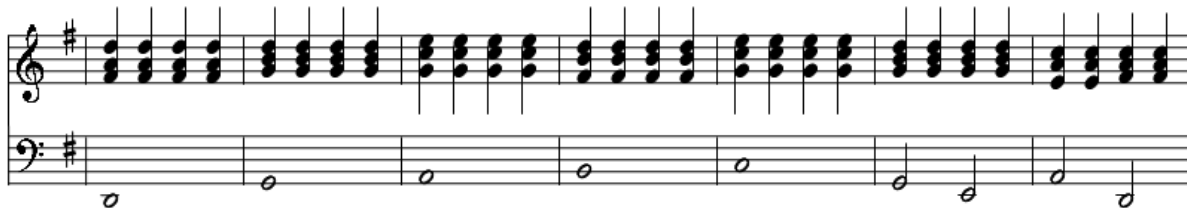
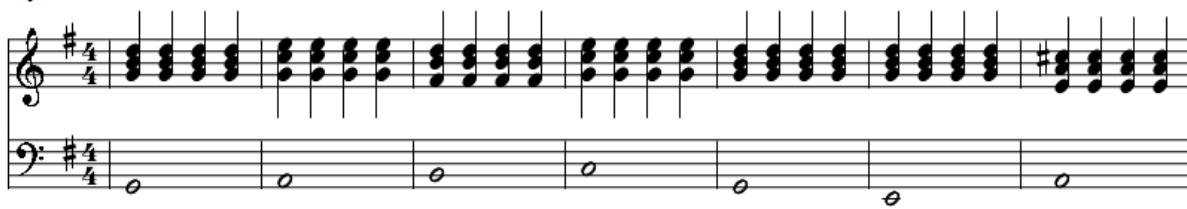


Chorus X 2

This is the melody. Play it with your favourite instrument.

Heeeeyyyy YOU!!! You can play awesome music!





This is the song's chord structure. Each box is a bar (or a count of 4). Some boxes have 2 chords, so count 2 for each .



| | | | |
|--------|-------|------|------|
| Verse | | | |
| G | Am7 | Bm | C |
| G | Em7 | A | D |
| G | Am7 | Bm | C |
| G- Em7 | Am-D7 | G | G |
| Chorus | | | |
| C-D | Bm | C-D | Em-C |
| G | C | G-Em | A7 |
| D7 | | | |



Never ever ever give up and you will play like a real monkee

